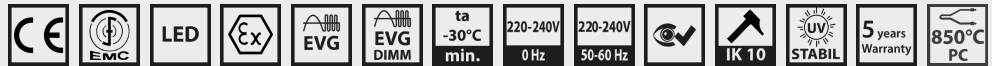


**EXTRA-EX2/21-G-L12-840-5000-0D2-08-PD-3F**

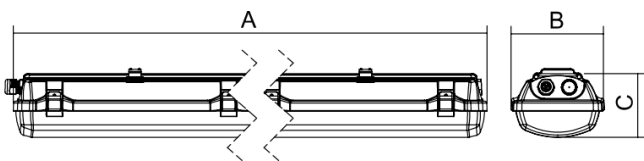
 Product type: **W0041G12050-840D24PD050008S**

 Item number: **66274**
**IP66/IP67**
**2/21**


Robust linear luminaire designed for hazardous areas according to IECEx/ATEX (zones 2/21, 22). Body made of robust polycarbonate (RAL 7035) with a silicone seal that does not degrade and is highly resistant to chemicals and oils or weathering. Cover made of highly resistant opal polycarbonate guaranteeing excellent brightness homogeneity and glare reduction. Equipped with electronic components that guarantee high specific power and LED lifetime of up to 110,000 h even at high temperatures. It is characterized by high splash and dust resistance IP66/IP67 as well as high impact resistance IK10. Supplied as standard with stainless steel clips and AISI304 stainless steel retaining lips. Designed for snap-on and hinge mounting.

**ADVANTAGES:**

- European product – made in the Czech Republic
- Can also be used for outdoor uncovered areas
- UV resistance
- LOOP-IN / LOOP-OUT – ready for looping
- High specific output up to 170 lm/W
- For ambient temperatures from -30 °C to +60 °C (depending on luminaire variant)
- Emergency version 3h – LiFePO4 battery


**Dimensions**
**A x B x C** 1280 mm x 155 mm x 105 mm

**Net weight** 3,53 kg

## Specifications

### Light technical data

|                                |                     |                      |           |
|--------------------------------|---------------------|----------------------|-----------|
| Lighting fixture luminous flux | 4159 lm +/-10%      | Luminaire efficiency | 158 lm/W  |
| CRI                            | 80                  | MacAdam              | 3         |
| Lifetime L80B50@max°C          | 110 000 h           | Lifetime L90B50@25°C | 110 000 h |
| Beam angle                     | Very wide beam >80° | Colour temperature   | 4000 K    |

### Electrical data

|   |                 |   |                       |
|---|-----------------|---|-----------------------|
| Power input                                   | 26,4 W          | Rated voltage AC                              | 220-240 V             |
| Frequency                                     | 50/60 Hz        | Rated voltage DC                              | 220-240 V             |
| Control method                                | DALI2 luminaire | Through-wiring                                | 7×2.5 mm <sup>2</sup> |
| Insulation class                              | I               | Number of luminaires per circuit breaker B10A | 34                    |
| Number of luminaires per circuit breaker B16A | 55              | Number of luminaires per circuit breaker C10A | 57                    |
| Number of luminaires per circuit breaker C16A | 93              | Momentum current                              | 20 A                  |

### Mechanical data

|                   |           |                       |                  |
|-------------------|-----------|-----------------------|------------------|
| IP classification | IP66/IP67 | IK classification     | IK10             |
| Warranty          | 5 years   | Operating temperature | -30°C ≤ t ≤ 55°C |

### Certification

|      |                    |       |                     |
|------|--------------------|-------|---------------------|
| ATEX | FTZU 25 ATEX 0056X | IECEX | IECEX FTZU 25.0020X |
|------|--------------------|-------|---------------------|

### Explosion protection ATEX

|                  |                           |                 |                       |
|------------------|---------------------------|-----------------|-----------------------|
| Ex ZONE          | 2/21                      | ATEX zone – gas | II 3G Ex nR IIC T6 Gc |
| ATEX zone – dust | II 2D Ex tb IIIC T85°C Db |                 |                       |

### Explosion protection IECEX

|                   |                     |                  |                 |
|-------------------|---------------------|------------------|-----------------|
| IECEX zone – dust | Ex tb IIIC T85°C Db | IECEX zone – gas | Ex nR IIC T6 Gc |
|-------------------|---------------------|------------------|-----------------|

**Materials**

|                             |                         |                    |               |
|-----------------------------|-------------------------|--------------------|---------------|
| <b>Material of the body</b> | PC (polycarbonate)      | <b>Body colour</b> | RAL 7035 grey |
| <b>Cover material</b>       | PC (polycarbonate) opal |                    |               |

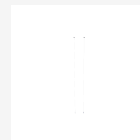
**Packaging**

|                      |               |                                    |        |
|----------------------|---------------|------------------------------------|--------|
| <b>Barcode (EAN)</b> | 8592040481618 | <b>Number of pieces per pallet</b> | 60 pcs |
|----------------------|---------------|------------------------------------|--------|

## Accessories to order

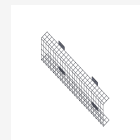
### Cable suspender – 3 m (2 pcs)

Item number: **3575**  
Product type: **051131**



### Protective cage EXTRA, EUROPA – L12

Item number: **20042**  
Product type: **001749-RAL9016**



### Set of wall brackets – 45° angle EXTRA, AISI304 – (2 pcs)

Item number: **34607**  
Product type: **064643**



### Set of pole brackets (Ø 60 mm), AISI304 (2 pcs)

Item number: **60089**  
Product type: **051093**



### Set of pole brackets (Ø 50 mm), AISI304 (2 pcs)

Item number: **60090**  
Product type: **051094**



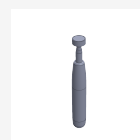
### Set of pole brackets (Ø 42 mm), AISI304 (2 pcs)

Item number: **60091**  
Product type: **051095**



### Telescopic magnet

Item number: **63023**  
Product type: **038013**



### Set of pole brackets (Ø 60 mm), AISI316 (2 pcs)

Item number: **66929**  
Product type: **051125**



**Set of pole brackets (Ø 50 mm), AISI316 (2 pcs)**Item number: **66930**Product type: **051126****Set of pole brackets (Ø 42 mm), AISI316 (2 pcs)**Item number: **66931**Product type: **051127****Set of wall brackets – 45° angle EXTRA (2 pcs) – AISI316**Item number: **67005**Product type: **051167****EXTRA wire suspension EXTRA (2 pcs)**Item number: **69110**Product type: **051192****Set of adjustable fixing brackets EXTRA (2 pcs)**Item number: **43432**Product type: **065465**

© 2026 All rights reserved. VYRTYCH a.s. does not warrant the accuracy or completeness of the information provided herein and is not responsible for any events that may occur as a result of unqualified reliance on this information. The information contained herein does not constitute a commercial offer and does not form part of a quotation or contract, unless confirmed by VYRTYCH a.s..