

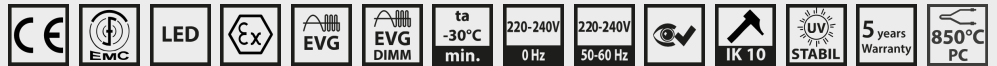
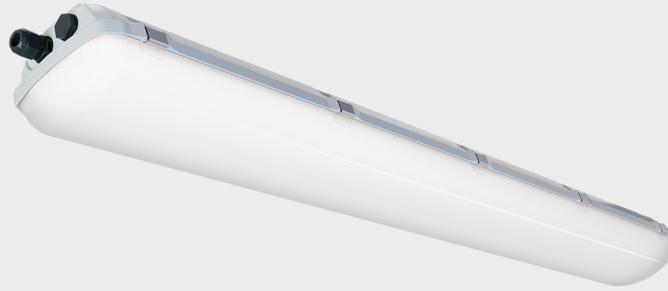
EXTRA-EX2/21-G-L15-840-16700-0ND-08-PD-3F

Product type: W0041G15167-840AA4PD050008S

Item number: 66446

IP66/IP67

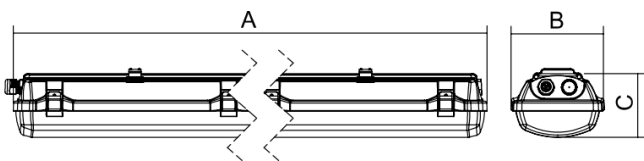
2/21



Robust linear luminaire designed for hazardous areas according to IECEx/ATEX (zones 2/21, 22). Body made of robust polycarbonate (RAL 7035) with a silicone seal that does not degrade and is highly resistant to chemicals and oils or weathering. Cover made of highly resistant opal polycarbonate guaranteeing excellent brightness homogeneity and glare reduction. Equipped with electronic components that guarantee high specific power and LED lifetime of up to 110,000 h even at high temperatures. It is characterized by high splash and dust resistance IP66/IP67 as well as high impact resistance IK10. Supplied as standard with stainless steel clips and AISI304 stainless steel retaining lips. Designed for snap-on and hinge mounting.

ADVANTAGES:

- European product - made in the Czech Republic
- Can also be used for outdoor uncovered areas
- UV resistance
- LOOP-IN / LOOP-OUT - ready for looping
- High specific output up to 170 lm/W
- For ambient temperatures from -30 °C to +60 °C (depending on luminaire variant)
- Emergency version 3h - LiFePO4 battery



Dimensions

A x B x C 1580 mm x 155 mm x 105 mm

Net weight 4,5 kg

Specifications

Light technical data

Lighting fixture luminous flux	13797 lm +/-10%	Luminaire efficiency	162 lm/W
CRI	80	MacAdam	3
Lifetime L80B50@max°C	110 000 h	Lifetime L90B50@25°C	110 000 h
Beam angle	Very wide beam >80°	Colour temperature	4000 K

Electrical data

Power input	85,1 W	Rated voltage AC	220-240 V
Frequency	50/60 Hz	Rated voltage DC	220-240 V
Control method	ON/OFF luminaire	Through-wiring	5×2.5 mm ²
Insulation class	I	Number of luminaires per circuit breaker B10A	13
Number of luminaires per circuit breaker B16A	21	Number of luminaires per circuit breaker C10A	22
Number of luminaires per circuit breaker C16A	36	Momentum current	37 A

Mechanical data

IP classification	IP66/IP67	IK classification	IK10
Warranty	5 years	Operating temperature	-30°C ≤ t ≤ 35°C

Certification

ATEX	FTZU 25 ATEX 0056X	IECEX	IECEX FTZU 25.0020X
------	--------------------	-------	---------------------

Explosion protection ATEX

Ex ZONE	2/21	ATEX zone – gas	II 3G Ex nR IIC T6 Gc
ATEX zone – dust	II 2D Ex tb IIIC T85°C Db		

Explosion protection IECEX

IECEX zone – dust	Ex tb IIIC T85°C Db	IECEX zone – gas	Ex nR IIC T6 Gc
-------------------	---------------------	------------------	-----------------

Materials

Material of the body	PC (polycarbonate)	Body colour	RAL 7035 grey
Cover material	PC (polycarbonate) opal		

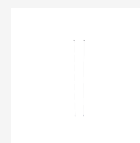
Packaging

Barcode (EAN)	8592040483339	Number of pieces per pallet	60 pcs
----------------------	---------------	------------------------------------	--------

Accessories to order

Cable suspender – 3 m (2 pcs)

Item number: **3575**
Product type: **051131**



Set of wall brackets – 45° angle EXTRA, AISI304 – (2 pcs)

Item number: **34607**
Product type: **064643**



Set of pole brackets (Ø 60 mm), AISI304 (2 pcs)

Item number: **60089**
Product type: **051093**



Set of pole brackets (Ø 50 mm), AISI304 (2 pcs)

Item number: **60090**
Product type: **051094**



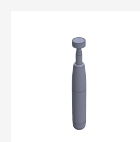
Set of pole brackets (Ø 42 mm), AISI304 (2 pcs)

Item number: **60091**
Product type: **051095**



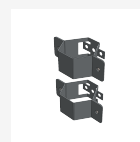
Telescopic magnet

Item number: **63023**
Product type: **038013**



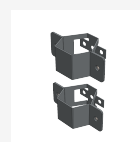
Set of pole brackets (Ø 60 mm), AISI316 (2 pcs)

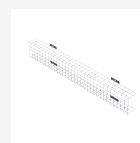
Item number: **66929**
Product type: **051125**



Set of pole brackets (Ø 50 mm), AISI316 (2 pcs)

Item number: **66930**
Product type: **051126**



Set of pole brackets (Ø 42 mm), AISI316 (2 pcs)Item number: **66931**Product type: **051127****Set of wall brackets – 45° angle EXTRA (2 pcs) – AISI316**Item number: **67005**Product type: **051167****EXTRA wire suspension EXTRA (2 pcs)**Item number: **69110**Product type: **051192****Set of adjustable fixing brackets EXTRA (2 pcs)**Item number: **43432**Product type: **065465****Protective cage EXTRA, EUROPA – L15**Item number: **20043**Product type: **001750-RAL9016**

© 2026 All rights reserved. VYRTYCH a.s. does not warrant the accuracy or completeness of the information provided herein and is not responsible for any events that may occur as a result of unqualified reliance on this information. The information contained herein does not constitute a commercial offer and does not form part of a quotation or contract, unless confirmed by VYRTYCH a.s..