

# Malux



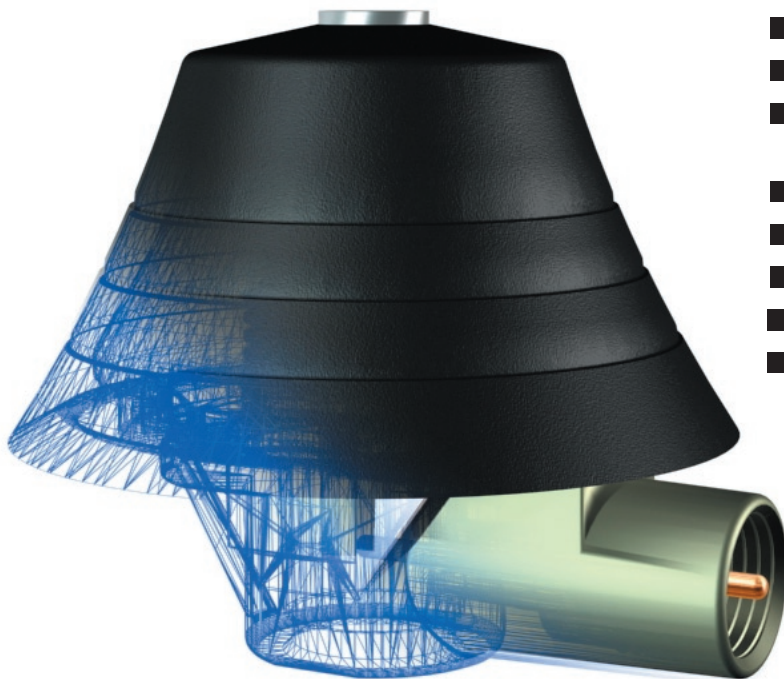
## Base 2500™

### Base 2500

Our new easy to mount high performance "allround" base. Base 2500 is designed to carry both long, low frequency radiators as well as short high frequency radiators.

The base is designed for use with radiators in the frequency range 27-2500 MHz. Can be combined with a number of radiators.

Read more in our product catalogue about suitable radiators.



- Designed for reliable fixed hole mounting
- Operates in frequency range 27-2500 MHz
- Robust and tested accordingly to automotive industry quality demands
- Designed for radiators with M4 or M6 threads
- Easy and quick mounting
- Easy to mount with the attached key
- Mount hole diameter 14 or 19 mm, max 20 mm
- Combines our long experience in antenna development with new technology

## Electrical and Mechanical data for Base 2500 body mount antenna

### Electrical

---

■ Frequency	27 - 2500 MHz
■ Impedance	Nominal 50 $\Omega$
■ Polarization	Linear vertical
■ VSWR	Depending on radiator
■ Gain	Depending on radiator
■ Max Power	50 W

### Mechanical

---

■ Dimension	39 x 22 ( $\varnothing$ xH) mm Note: Without radiator
■ Weight	37 g without cable Note: Without radiator
■ Material	Base: Zamak, Arnitel, Stainless steel, ABS, Zutel
■ Colour	Black

### Environmental

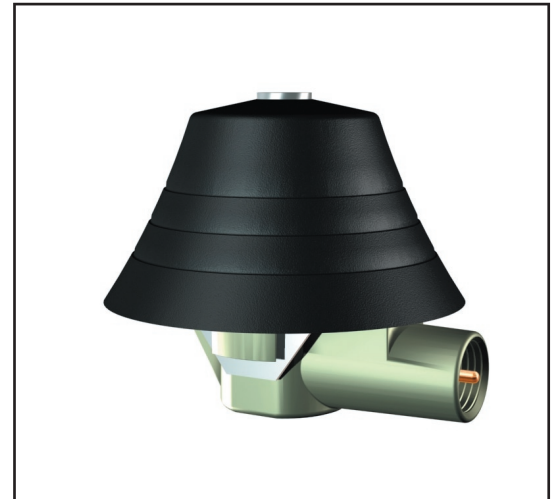
---

■ Temperature	Storage: -40°C +85°C Operating: -30°C +70°C
---------------	--

### Other

---

■ Cable	Without cable
■ Connector	FME (m) in the base
■ ISO9001 Certified	



Smarteq reserves the right to change specifications without prior notice.

Smarteq's business concept is to use the latest technology to develop products in the field of wireless telecommunications.  
The business is focused on the development and sale of products for the end market and the OEM market.