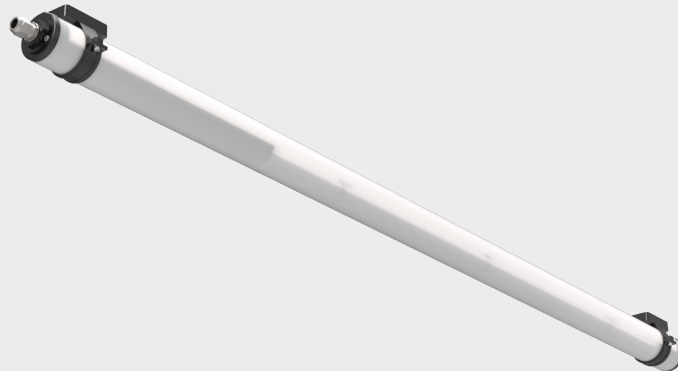


**AQUA-70-LED**

IP66/IP67/IP68/IP69


**Description**

Robust tubular luminaire designed for very demanding industrial environments with high humidity. Body made of highly durable polycarbonate or chemical resistant PMMA tubing. The luminaire end caps are made of special plastic with glass fibre and together with the silicone gasket guarantee high splash and dust resistance IP66 as well as immersion resistance IP68 up to 15 m as well as high impact resistance IK10 in case of PC and IK06 in case of PMMA. Equipped with high quality electronic components with a high LED lifetime of up to 100,000 h and an efficiency of 115 lm/W. Suitable for ambient temperatures from -20 °C to +50 °C (depending on luminaire variant). The luminaire is mounted on the ceiling or wall with plastic or stainless steel brackets.

**Specifications****Operating voltage:**

220-240 V / 50/60 Hz AC, 220-240 V DC

**Source:**

LED, 4000K, CRI +80, MacAdam3

**Housing:**

Pipe with outer diameter 70 mm and wall thickness 4 mm made of opal PC – IK10 (polycarbonate) or opal PMMA – IK06 (polymethyl methacrylate) finished with sealing plugs

**Fastening:**

Fixing to the ceiling or wall of the illuminated space or hanging using mounting brackets (not included)

**Connection:**

Screw connector terminal block, max. wire cross section 2.5 mm<sup>2</sup>. The luminaire can be supplied with pre-installed cable.

**Standard equipment:**

M20 gland for cable diameter 6-13 mm

**Calculated lifetime – LED modules:**

L80B10 Ta 30 – 70 000 h

L70B10 Ta 30 – 100 000 h

## On request

**3000K/4000K/5000K/6500K** – colour temperature

**MULTI** – permanent emergency lighting (1h, 3h)

**EM** – temporary emergency lighting (1h, 3h)

**DIM** – dimmable electronic ballast (DALI, DSI, 1-10V)

**1/3F** – single-phase or three-phase, max. conductor cross-section 2.5 mm<sup>2</sup>

**GESIS** – possibility to equip the luminaires with connectors

**II** – Insulation class II

**CRI** – colour rendering index > 90

## Variants

Number items	Name of variant	Luminous flux (lm)	Specific power luminaires	Power input (W)	Ta (°C)	Dimensions A x B x C (mm)
<a href="#">32065</a>	AQUA-70-LED-FL-2500-4K, IP66/IP67/IP68/IP69, l= 780mm	1903	112 lm/W	17	-20°C≤ta≤50°C	780 x 70 x 70
<a href="#">32067</a>	AQUA-70-LED-FL-5000-4K, IP66/IP67/IP68/IP69, l= 1270mm	3806	109 lm/W	35	-20°C≤ta≤40°C	1270 x 70 x 70
<a href="#">32069</a>	AQUA-70-LED-FL-7800-4K, IP66/IP67/IP68/IP69, l= 1740mm	5709	110 lm/W	52	-20°C≤ta≤40°C	1740 x 70 x 70
<a href="#">34508</a>	AQUA-70-LED-FL-PMMA-2500-4K, IP66/IP67/IP68/IP69, l= 780mm	1954	115 lm/W	17	-20°C≤ta≤50°C	780 x 70 x 70
<a href="#">34510</a>	AQUA-70-LED-FL-PMMA-5000-4K, IP66/IP67/IP68/IP69, l= 1270mm	3909	112 lm/W	35	-20°C≤ta≤40°C	1270 x 70 x 70
<a href="#">34512</a>	AQUA-70-LED-FL-PMMA-7800-4K, IP66/IP67/IP68/IP69, l= 1740mm	5864	113 lm/W	52	-20°C≤ta≤40°C	1740 x 70 x 70

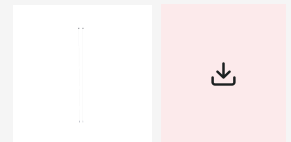
Luminous flux and luminaire power tolerance ±10%

You can view the variant detail via the item number.

## Accessories

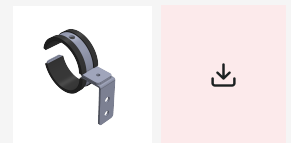
### Cable hanger AQUA-70 stainless steel AISI304 (2 pcs)

Item number: **3578**  
Product type: **051134**



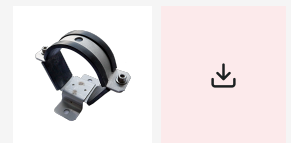
### Mounting bracket AQUA-70 stainless steel complete (1 pc)

Item number: **28448**  
Product type: **053627**



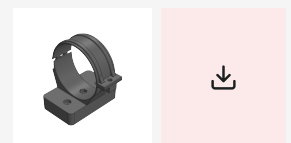
### Mounting bracket AQUA-70 stainless steel complete (1 pc)

Item number: **4189**  
Product type: **053628**



### Mounting bracket AQUA-70 complete dark (1 pc)

Item number: **4190**  
Product type: **053629**



**Mounting bracket AQUA-70 complete light (1 pc)**

Item number: **4191**  
Product type: **053630**

**Mounting bracket AQUA-70 stainless steel, complete (1 piece), for direct mounting on the surface**

Item number: **37043**  
Product type: **064898**



© 2026 All rights reserved. VYRTYCH a.s. does not warrant the accuracy or completeness of the information provided herein and is not responsible for any events that may occur as a result of unqualified reliance on this information. The information contained herein does not constitute a commercial offer and does not form part of a quotation or contract, unless confirmed by VYRTYCH a.s..