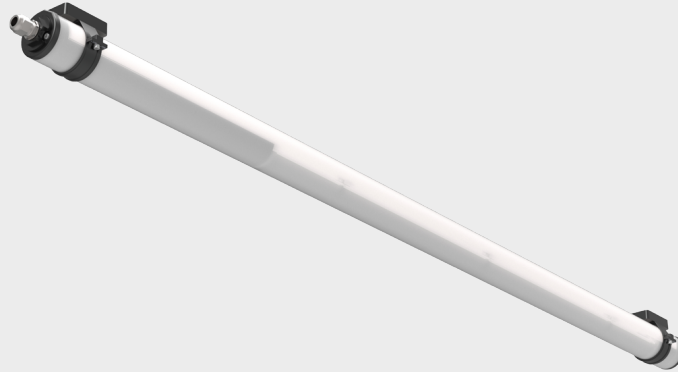


**AQUA-70-EX-LED**
**IP66/IP68**
**ZONE 1/21**

**Description**

Robust tubular luminaire for use in hazardous areas for ATEX zone 1/21. Body made of highly resistant polycarbonate tube. The luminaire end caps are made of special plastic with glass fibre and together with the silicone gasket guarantee high splash and dust resistance IP66 as well as immersion resistance IP68 up to 15 m as well as high impact resistance IK10. Equipped with certified electronic components – the encapsulated LED module and driver guarantee a high efficiency of up to 139 lm/W and an LED lifetime of up to 45,000 h even at high temperatures. Suitable for ambient temperatures from -20 °C to +50 °C (depending on luminaire variant). The luminaire is mounted on the ceiling or wall with plastic or stainless steel brackets.

## Specifications

**Operating voltage:**

110-254 V / 50/60 Hz AC, 220-250 V DC

**Source:**

LED, 4000K, CRI +80

**Housing:**

Tube with outer diameter 70 mm and wall thickness 4 mm made of clear PC – IK10 (polycarbonate)

**Fastening:**

Fixing to the ceiling or wall of the illuminated space or hanging using mounting brackets (not included)

**Connection:**

Screwless three-pole terminal block, max. conductor cross-section 4 mm<sup>2</sup>

**Standard equipment:**

M20 gland for cable diameter 7-13 mm and 1x plug

**Calculated lifetime – LED modules:**

L80B50 Ta 50 – 45 000 h

**AQUA-70-Ex-LED-D (FTZU 17 ATEX 0052X)**

 II 2G Ex db eb mb op is IIC T4 Gb

 II 2D Ex tb op is IIIC T62°C Db

**AQUA-70-Ex-LED-WOD (FTZU 17 ATEX 0052X)**

 II 2G Ex eb mb op is IIC T4 Gb

 II 2D Ex tb op is IIIC T62°C Db

## On request

**3000K/4000K/6000K** – chromaticity temperature

**1F** – single-phase connection, max. conductor cross-section 4 mm<sup>2</sup>

## Variants

Number items	Name of variant	Luminous flux (lm)	Specific power luminaires	Power input (W)	Ta (°C)	Dimensions A x B x C (mm)
40693	AQUA-70-Ex-LED-D-2750-118-4K, IP66/ IP68	2107	132 lm/W	16	-20°Cstas50°C	1149 x 70 x 70
35946	AQUA-70-Ex-LED-D-4000-118-4K, IP66/ IP68	3061	109 lm/W	28	-20°Cstas50°C	1149 x 70 x 70
40694	AQUA-70-Ex-LED-D-5500-136-4K, IP66/ IP68	4175	139 lm/W	30	-20°Cstas50°C	1709 x 70 x 70
35947	AQUA-70-Ex-LED-D-8000-136-4K, IP66/ IP68	5985	117 lm/W	51	-20°Cstas50°C	1709 x 70 x 70
40695	AQUA-70-Ex-LED-WOD-2750-118-4K, IP66/ IP68	2107	132 lm/W	16	-20°Cstas50°C	1149 x 70 x 70
33541	AQUA-70-Ex-LED-WOD-4000-118-4K, IP66/ IP68	3061	109 lm/W	28	-20°Cstas50°C	1149 x 70 x 70
40708	AQUA-70-Ex-LED-WOD-5500-136-4K, IP66/ IP68	4175	139 lm/W	30	-20°Cstas50°C	1709 x 70 x 70
35948	AQUA-70-Ex-LED-WOD-8000-136-4K, IP66/ IP68	5985	117 lm/W	51	-20°Cstas50°C	1709 x 70 x 70

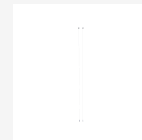
Luminous flux and luminaire power tolerance ±10%

You can view the variant detail via the item number.

## Accessories

### Cable hanger AQUA-70 stainless steel AISI304 (2 pcs)

Item number: **3578**  
Product type: **051134**



### Mounting bracket AQUA-70 stainless steel complete (1 pc)

Item number: **28448**  
Product type: **053627**



### Mounting bracket AQUA-70 stainless steel complete (1 pc)

Item number: **4189**  
Product type: **053628**



### Mounting bracket AQUA-70 complete dark (1 pc)

Item number: **4190**  
Product type: **053629**



**Mounting bracket AQUA-70 complete light (1 pc)**

Item number: **4191**  
Product type: **053630**

**Mounting bracket AQUA-70 stainless steel, complete (1 piece), for direct mounting on the surface**

Item number: **37043**  
Product type: **064898**



© 2026 All rights reserved. VYRTYCH a.s. does not warrant the accuracy or completeness of the information provided herein and is not responsible for any events that may occur as a result of unqualified reliance on this information. The information contained herein does not constitute a commercial offer and does not form part of a quotation or contract, unless confirmed by VYRTYCH a.s..