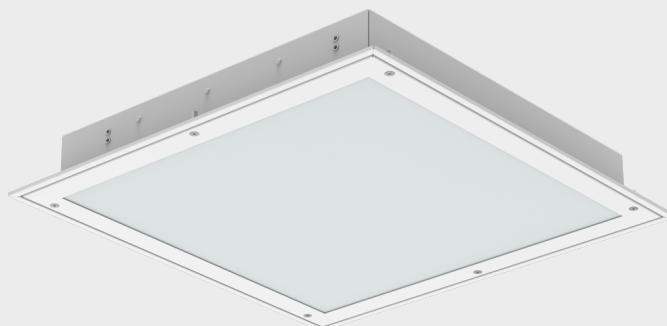


**BORDER-N-LED-M598**
**IP66**
**ZONE 2/21**

**Description**

Metal recessed or fixed luminaire designed for applications in hazardous areas for ATEX zone 2/21, 22 (pharmaceutical production, food production, chemical warehouses, electric vehicle battery production, etc.). Body made of powder coated steel sheet (RAL 9016) – alternatively stainless steel AISI304 or AISI316 for aggressive environments. Luminaire cover in several versions – opal glass, clear glass in combination with opal or microprismatic diffuser, clear plexiglass in combination with opal or microprismatic diffuser. Equipped with high quality electronic components with a high LED lifetime of up to 100 000 h and an efficiency of 158 lm/W. It is characterised by high splash and dust resistance IP66. Suitable for ambient temperatures from -40 °C to +60 °C (depending on luminaire variant). Classified for clean rooms ISO 14644-1. Large luminaire variability with regard to installation – raster ceilings M600/625, metal ceilings M598/M623 or plasterboard or other atypical ceilings.

## Specifications

**Operating voltage:**

220-240 V / 50/60 Hz AC, 220-240 V DC

**Source:**

LED, 4000K, CRI +80, MacAdam3

**Housing:**

Painted steel sheet RAL 9016

**Cover:**

**GLM** – frosted tempered safety glass

**OP** – clear PC + opal diffuser

**MP** – clear PC + microprismatic diffuser

**CGOP** – clear tempered safety glass + optical opal plexi cover

**CGMP** – clear tempered safety glass + microprismatic plexi cover

**Fastening:**

Mounting with levelling set in metal ceilings M598/M623 (not included). The minimum height of the free cavity in the ceiling is 200 mm.

**Connection:**

Screwless three-pole terminal block, max. wire cross-section 2.5 mm<sup>2</sup>

**Standard equipment:**

2x M20 gland for cable diameter 7-12 mm


3x stopper plug

**Calculated lifetime – LED modules:**

L80B10 Ta 30 – 70 000 h


L70B10 Ta 30 – 100 000 h

**BORDER-N-LED zone 2, 21 (FTZU 23 ATEX 0038X)**

 II 3G Ex nR IIC T6 Gc

 II 2D Ex tb op is IIIC T85°C Db

**BORDER-N-LED zone 2, 22 (FTZU 23 ATEX 0039X)**

 II 3G Ex nR IIC T6 Gc

 II 3D Ex tc IIIC T85°C Dc

## On request

- 3000K/4000K/5000K/6500K** – chromaticity temperatures
- MULTI** – permanent emergency lighting (1h, 3h)
- DIM** – dimmable electronic ballast (DALI)
- CB** – central battery system

## Variants

Number items	Name of variant	Luminous flux (lm)	Specific power luminaires	Power input (W)	Ta (°C)	Dimensions A x B x C (mm)
<a href="#">48525</a>	BORDER-N-LED-2/21-M598-SQ-CGMP-3300-4K, IP66	2440	144 lm/W	17	-20°Cstas60°C	598 x 598 x 87
<a href="#">48526</a>	BORDER-N-LED-2/21-M598-SQ-CGMP-4800-4K, IP66	3610	134 lm/W	27	-20°Cstas60°C	598 x 598 x 87
<a href="#">48527</a>	BORDER-N-LED-2/21-M598-SQ-CGMP-6300-4K, IP66	4753	128 lm/W	37	-20°Cstas60°C	598 x 598 x 87
<a href="#">48528</a>	BORDER-N-LED-2/21-M598-SQ-CGMP-7200-4K, IP66	5506	134 lm/W	41	-20°Cstas60°C	598 x 598 x 87
<a href="#">48529</a>	BORDER-N-LED-2/21-M598-SQ-CGMP-8700-4K, IP66	6604	135 lm/W	49	-20°Cstas60°C	598 x 598 x 87
<a href="#">48530</a>	BORDER-N-LED-2/21-M598-SQ-CGMP-12000-4K, IP66	9072	130 lm/W	70	-20°Cstas45°C	598 x 598 x 87
<a href="#">48555</a>	BORDER-N-LED-2/21-M598-R-CGMP-3300-4K, IP66	2360	139 lm/W	17	-20°Cstas60°C	1198 x 298 x 87
<a href="#">48556</a>	BORDER-N-LED-2/21-M598-R-CGMP-4800-4K, IP66	3505	130 lm/W	27	-20°Cstas60°C	1198 x 298 x 87
<a href="#">48557</a>	BORDER-N-LED-2/21-M598-R-CGMP-6300-4K, IP66	4615	125 lm/W	37	-20°Cstas60°C	1198 x 298 x 87
<a href="#">48558</a>	BORDER-N-LED-2/21-M598-R-CGMP-7200-4K, IP66	5320	130 lm/W	41	-20°Cstas60°C	1198 x 298 x 87
<a href="#">48559</a>	BORDER-N-LED-2/21-M598-R-CGMP-8700-4K, IP66	6350	130 lm/W	49	-20°Cstas55°C	1198 x 298 x 87
<a href="#">48560</a>	BORDER-N-LED-2/21-M598-R-CGMP-12000-4K, IP66	8808	126 lm/W	70	-20°Cstas40°C	1198 x 298 x 87
<a href="#">49960</a>	BORDER-N-LED-2/21-M598-FROST-SQ-CGMP-3300-4K, IP66	2440	144 lm/W	17	-40°Cstas55°C	598 x 598 x 87
<a href="#">49961</a>	BORDER-N-LED-2/21-M598-FROST-SQ-CGMP-4800-4K, IP66	3610	134 lm/W	27	-40°Cstas55°C	598 x 598 x 87
<a href="#">49962</a>	BORDER-N-LED-2/21-M598-FROST-SQ-CGMP-6300-4K, IP66	4753	128 lm/W	37	-40°Cstas55°C	598 x 598 x 87
<a href="#">49963</a>	BORDER-N-LED-2/21-M598-FROST-SQ-CGMP-7200-4K, IP66	5506	134 lm/W	41	-40°Cstas60°C	598 x 598 x 87
<a href="#">49964</a>	BORDER-N-LED-2/21-M598-FROST-SQ-CGMP-8700-4K, IP66	6604	135 lm/W	49	-40°Cstas60°C	598 x 598 x 87
<a href="#">49990</a>	BORDER-N-LED-2/21-M598-FROST-R-CGMP-3300-4K, IP66	2360	139 lm/W	17	-40°Cstas60°C	1198 x 298 x 87
<a href="#">49991</a>	BORDER-N-LED-2/21-M598-FROST-R-CGMP-4800-4K, IP66	3505	130 lm/W	27	-40°Cstas60°C	1198 x 298 x 87
<a href="#">49992</a>	BORDER-N-LED-2/21-M598-FROST-R-CGMP-6300-4K, IP66	4615	125 lm/W	37	-40°Cstas60°C	1198 x 298 x 87
<a href="#">49993</a>	BORDER-N-LED-2/21-M598-FROST-R-CGMP-7200-4K, IP66	5320	130 lm/W	41	-40°Cstas60°C	1198 x 298 x 87
<a href="#">49994</a>	BORDER-N-LED-2/21-M598-FROST-R-CGMP-8700-4K, IP66	6350	130 lm/W	49	-40°Cstas60°C	1198 x 298 x 87

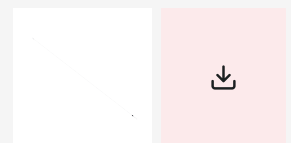
Luminous flux and luminaire power tolerance  $\pm 10\%$

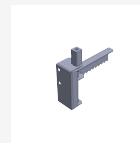
You can view the variant detail via the item number.

## Accessories

### Set of safety suspension

Item number: **57512**  
Product type: **051232**



**Nivelation set for BORDER-N-LED (4 pcs) – for metal ceilings and plasterboard**Item number: **57800**Product type: **051233**

© 2026 All rights reserved. VYRTYCH a.s. does not warrant the accuracy or completeness of the information provided herein and is not responsible for any events that may occur as a result of unqualified reliance on this information. The information contained herein does not constitute a commercial offer and does not form part of a quotation or contract, unless confirmed by VYRTYCH a.s..