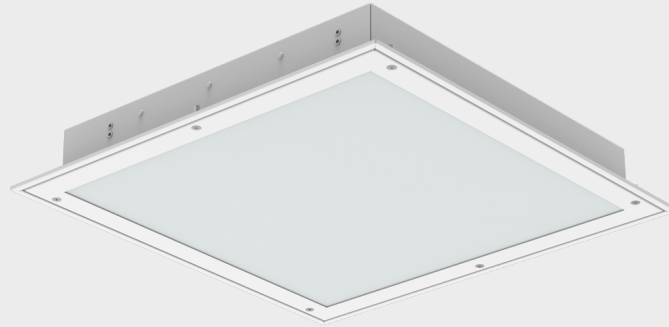


BORDER-N-LED-M600/PB
IP66
ZONE 2/21


Description

Metal recessed or fixed luminaire designed for applications in hazardous areas for ATEX zone 2/21, 22 (pharmaceutical production, food production, chemical warehouses, electric vehicle battery production, etc.). Body made of powder coated steel sheet (RAL 9016) – alternatively stainless steel AISI304 or AISI316 for aggressive environments. Luminaire cover in several versions – opal glass, clear glass in combination with opal or microprismatic diffuser, clear plexiglass in combination with opal or microprismatic diffuser. Equipped with high quality electronic components with a high LED lifetime of up to 100 000 h and an efficiency of 158 lm/W. It is characterised by high splash and dust resistance IP66. Suitable for ambient temperatures from -40 °C to +60 °C (depending on luminaire variant). Classified for clean rooms ISO 14644-1. Large luminaire variability with regard to installation – raster ceilings M600/625, metal ceilings M598/M623 or plasterboard or other atypical ceilings. Attached version with attached frame.

Specifications

Operating voltage:

220-240 V / 50/60 Hz AC, 220-240 V DC

Source:

LED, 4000K, CRI +80, MacAdam3

Housing:

Painted steel sheet RAL 9016

Cover:

GLM – frosted tempered safety glass

OP – clear PC + opal diffuser

MP – clear PC + microprismatic diffuser

CGOP – clear tempered safety glass + optical opal plexi cover

CGMP – clear tempered safety glass + microprismatic plexi cover

Fastening:

Mounting with levelling set in metal ceilings M598/M623 (not included). The minimum height of the free cavity in the ceiling is 200 mm.

Connection:

Screwless three-pole terminal block, max. wire cross-section 2.5 mm²

Standard equipment:

2x M20 gland for cable diameter 7-12 mm


3x stopper plug

Calculated lifetime – LED modules:

L80B10 Ta 30 – 70 000 h


L70B10 Ta 30 – 100 000 h

BORDER-N-LED zone 2, 21 (FTZU 23 ATEX 0038X)

 II 3G Ex nR IIC T6 Gc

 II 2D Ex tb op is IIIC T85°C Db

BORDER-N-LED zone 2, 22 (FTZU 23 ATEX 0039X)

 II 3G Ex nR IIC T6 Gc

 II 3D Ex tc IIIC T85°C Dc

- 3000K/4000K/5000K/6500K** – chromaticity temperatures
- MULTI** – permanent emergency lighting (1h, 3h)
- DIM** – dimmable electronic ballast (DALI)
- CB** – central battery system

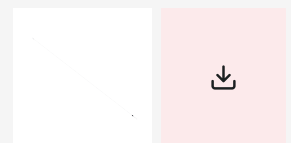
Number items	Name of variant	Luminous flux (lm)	Specific power luminaires	Power input (W)	Ta (°C)	Dimensions A x B x C (mm)
45670	BORDER-N-LED-2/21-M600-SQ-CGMP-3300-4K, IP66	2440	144 lm/W	17	-20°Cstas60°C	595 x 595 x 87
45671	BORDER-N-LED-2/21-M600-SQ-CGMP-4800-4K, IP66	3610	134 lm/W	27	-20°Cstas60°C	595 x 595 x 87
45672	BORDER-N-LED-2/21-M600-SQ-CGMP-6300-4K, IP66	4753	128 lm/W	37	-20°Cstas60°C	595 x 595 x 87
45673	BORDER-N-LED-2/21-M600-SQ-CGMP-7200-4K, IP66	5506	134 lm/W	41	-20°Cstas60°C	595 x 595 x 87
45674	BORDER-N-LED-2/21-M600-SQ-CGMP-8700-4K, IP66	6604	135 lm/W	49	-20°Cstas60°C	595 x 595 x 87
45675	BORDER-N-LED-2/21-M600-SQ-CGMP-12000-4K, IP66	9072	130 lm/W	70	-20°Cstas45°C	595 x 595 x 87
45700	BORDER-N-LED-2/21-M600-R-CGMP-3300-4K, IP66	2360	139 lm/W	17	-20°Cstas60°C	1195 x 295 x 87
45701	BORDER-N-LED-2/21-M600-R-CGMP-4800-4K, IP66	3505	130 lm/W	27	-20°Cstas60°C	1195 x 295 x 87
45702	BORDER-N-LED-2/21-M600-R-CGMP-6300-4K, IP66	4615	125 lm/W	37	-20°Cstas60°C	1195 x 295 x 87
45703	BORDER-N-LED-2/21-M600-R-CGMP-7200-4K, IP66	5320	130 lm/W	41	-20°Cstas60°C	1195 x 295 x 87
45704	BORDER-N-LED-2/21-M600-R-CGMP-8700-4K, IP66	6350	130 lm/W	49	-20°Cstas55°C	1195 x 295 x 87
45705	BORDER-N-LED-2/21-M600-R-CGMP-12000-4K, IP66	8808	126 lm/W	70	-20°Cstas40°C	1195 x 295 x 87
49840	BORDER-N-LED-2/21-M600-FROST-SQ-CGMP-3300-4K, IP66	2440	144 lm/W	17	-40°Cstas55°C	595 x 595 x 87
49841	BORDER-N-LED-2/21-M600-FROST-SQ-CGMP-4800-4K, IP66	3610	134 lm/W	27	-40°Cstas55°C	595 x 595 x 87
49842	BORDER-N-LED-2/21-M600-FROST-SQ-CGMP-6300-4K, IP66	4753	128 lm/W	37	-40°Cstas55°C	595 x 595 x 87
49843	BORDER-N-LED-2/21-M600-FROST-SQ-CGMP-7200-4K, IP66	5506	134 lm/W	41	-40°Cstas60°C	595 x 595 x 87
49844	BORDER-N-LED-2/21-M600-FROST-SQ-CGMP-8700-4K, IP66	6604	135 lm/W	49	-40°Cstas60°C	595 x 595 x 87
49870	BORDER-N-LED-2/21-M600-FROST-R-CGMP-3300-4K, IP66	2360	139 lm/W	17	-40°Cstas60°C	1195 x 295 x 87
49871	BORDER-N-LED-2/21-M600-FROST-R-CGMP-4800-4K, IP66	3505	130 lm/W	27	-40°Cstas60°C	1195 x 295 x 87
49872	BORDER-N-LED-2/21-M600-FROST-R-CGMP-6300-4K, IP66	4615	125 lm/W	37	-40°Cstas60°C	1195 x 295 x 87
49873	BORDER-N-LED-2/21-M600-FROST-R-CGMP-7200-4K, IP66	5320	130 lm/W	41	-40°Cstas60°C	1195 x 295 x 87
49874	BORDER-N-LED-2/21-M600-FROST-R-CGMP-8700-4K, IP66	6350	130 lm/W	49	-40°Cstas60°C	1195 x 295 x 87

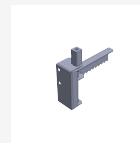
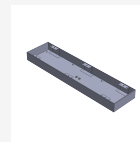
Luminous flux and luminaire power tolerance ±10%

You can view the variant detail via the item number.

Set of safety suspension

Item number: **57512**
 Product type: **051232**



Nivelation set for BORDER-N-LED (4 pcs) – for metal ceilings and plasterboardItem number: **57800**Product type: **051233****Frame for surface mounting BORDER-SQ 600×600**Item number: **57533**Product type: **065725****Frame for surface mounting BORDER-R 1200×300**Item number: **57534**Product type: **065726**

© 2026 All rights reserved. VYRTYCH a.s. does not warrant the accuracy or completeness of the information provided herein and is not responsible for any events that may occur as a result of unqualified reliance on this information. The information contained herein does not constitute a commercial offer and does not form part of a quotation or contract, unless confirmed by VYRTYCH a.s..