

(1) EU - Type Examination Certificate

(2) Equipment and protective systems intended for use in potentially explosive atmospheres – **Directive 2014/34/EU**

(3) EU - Type Examination Certificate Number

EPS 20 ATEX 1 203 X

Revision 0

(4) Equipment: IS-TH1xx.1 intrinsically safe, rugged scan trigger handle

(5) Manufacturer: i.safe MOBILE GmbH

(6) Address: i_Park Tauberfranken 10
97922 Lauda-Koenigshofen
Germany

(7) This equipment and any acceptable variation thereto are specified in the annex to this certificate and the documentation therein referred to.

(8) Bureau Veritas Consumer Products Services Germany GmbH, notified body No. 2004 in accordance with Article 21 given in the Directive 2014/34/EU of the European Parliament and of the Council of 26 February 2014, certifies that this equipment has been found to comply with the essential health and safety requirements relating to the design and construction of equipment and protective systems intended for use in potentially explosive atmospheres, given in Annex II of the Directive. The examination and test results are recorded in the confidential documentation under the reference number 20TH0473.

(9) Compliance with the essential health and safety requirements has been assured by compliance with:

EN IEC 60079-0:2018


EN 60079-11:2012

EN 60079-28:2015

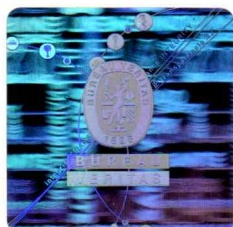
(10) If the sign "X" is placed after the certificate number, it indicates that the equipment is subject to special conditions for safe use specified in the annex to this certificate.

(11) This EU - Type Examination Certificate relates only to the design and construction of the specified equipment in accordance with Directive 2014/34/EU. Further requirements of this Directive apply to the manufacture of this equipment and its placing on the market. Those requirements are not covered by this certificate.

(12) The marking of the equipment shall include the following:

 II 2G Ex ib op is IIC T4 Gb

 II 2D Ex ib op is IIIC T135°C Db



Certification department of explosion protection

Hamburg, 2021-04-19

H. Schaffer



(13) **Annex**

(14) **EU - Type Examination Certificate EPS 20 ATEX 1 203 X**

Revision 0

(15) Description of equipment:

The IS-TH1xx.1, has been designed for the use in explosion hazardous areas of zone 1 and 21. In combination with mobile communication devices, the multifunctional set enables quick and easy scanning of any 1D or 2D barcodes at close range or at distances of more than 15 meters.

Electrical data:

The supply and interface connection of the IS-TH1xx.1 is carried out via the ISM interface of the compatible communication devices. The IS-TH1xx.1 is certified in combination with the IS530.1 or other mobile devices that comply with the connection parameters in accordance with document 1040AD04.

Scan engine variants of IS-TH1xx.1	
IS-TH1SR.1	Standard range Scan Engine Zebra SE4750SR
IS-TH1MR.1	Mid range Scan Engine Zebra SE4750MR
IS-TH1ER.1	Extended range Scan Engine Zebra SE4850ER

(16) Reference number: 20TH0473

(17) Special conditions for safe use:

The 13-pin connector of the IS-TH1xx.1 may only be assembled or disassembled from the ISM interface outside hazardous areas.

The device must be protected from impacts with high impact energy, against excessive UV light emission and high electrostatic charge processes.

The permitted ambient temperature range is -20 °C to +60 °C.

(18) Essential health and safety requirements:

Met by compliance with standards.



Certification department of explosion protection

Hamburg, 2021-04-19