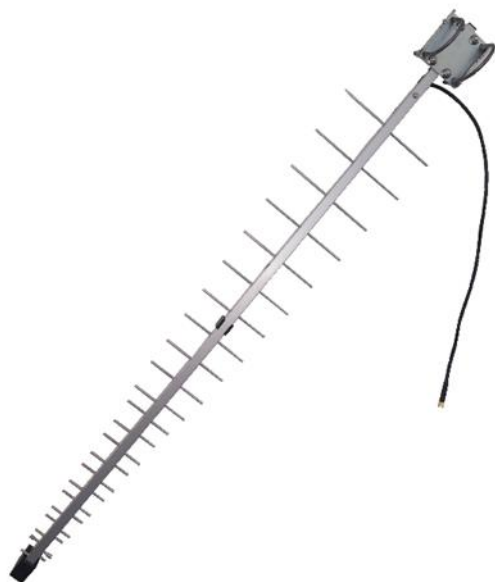


# LPA922

## Directional Antenna

LPA922 is a broadband antenna with high gain and designed to be used in tough conditions.

- 698-960MHz and 1710-2690MHz
- Easy to install
- Wall or pole mounted



### Specifications

#### Electrical

Frequencies	698-960MHz	
	1710-2690MHz	
Impedance	50Ω	
Polarization	Vertical	
VSWR	< 2.0:1	
Gain	698-790MHz	8dBi
	790-960MHz / 1710-2690MHz	11dBi
Max power	10W	

#### Mechanical

Dimensions (L x W x H)	1040 x 170 x 40mm
Cable	RG223, black, 0.5m
Connector	SMA(m)
Weight	850g
Material	Aluminum
Installation	On wall or pole (Ø 35-54mm)

#### MIMO (Multiple-In-Multiple-Out Solution)

The MIMO technology significantly increases data throughput. Smarteq recommends to install two LPA922 antennas to improve communication performance.

#### Other

This part is RoHS compliant.

#### Part number

710327

Tested according to standards:

IEC60068-2-1  
IEC60068-2-2  
IEC60068-2-11  
IEC60068-2-14

Smarteq reserves the right to change specifications without prior notice.