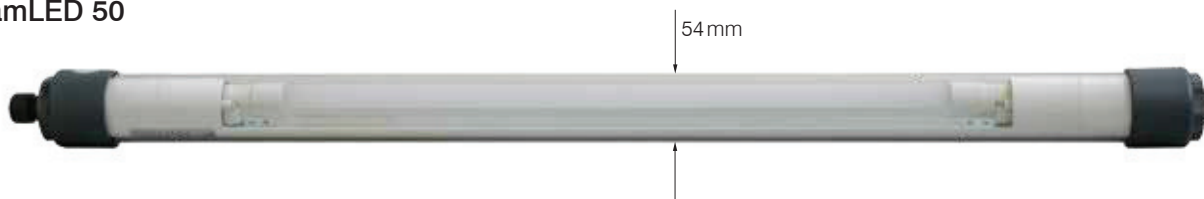


## StreamLED 50



## StreamLED 70



The StreamLED is our answer of market trend with LED lamps. A standard LED tube from a leading manufacturer builds the base of StreamLED. Further features are the high protection category (IP68/69K) and the compact construction.

### Features

- Slight energy consumption at high luminance efficacy
- Immediate full luminous flux
- Minimal temperatures progression
- Steady light power no matter which outside temperature
- No starter and ballast necessary
- Not dimmable
- Resistant to shocks and vibrations
- No UV/IR radiation

### Technical Data

Operating voltage:	230 VAC
Output:	11 W to 28 W
Light temperature:	4'000 K
Operating life:	over 40'000 operating hours
Protection category:	IP68 <sub>0.5m</sub> /69 K (higher protection category IP68 <sub>5m</sub> possible)*
Protection class:	I
Temperature range:	-25° C to +45° C
Calibre:	54 mm or 70 mm

\*IP68<sub>5m</sub>: For constant use up to maximum 5m under water with end-caps and sealed connection.

Item no. Glass	Item no. Polycarbonate	Output/ Lamps	Luminous flux	Light colour	Operating voltage	A mm	B mm	C mm	D mm
-------------------	---------------------------	------------------	------------------	--------------	----------------------	---------	---------	---------	---------

### StreamLED 50 with lamps LED and Feed-trough wiring

840153	840001	10 W LED	1'400 lm	4'000 K	230 V	90	615	81	935
840154	840002	18 W LED	2'600 lm	4'000 K	230 V	90	1'224	81	1'545
	840003	24 W LED	3'500 lm	4'000 K	230 V	90	1'524	81	1'845

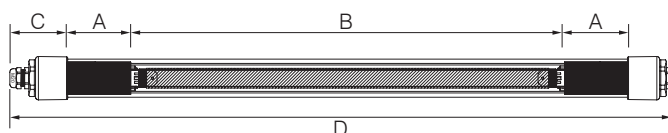
A mounting wrench (item no. 033284) is required for the StreamLED 50.

### StreamLED 70 with lamps LED and Feed-trough wiring

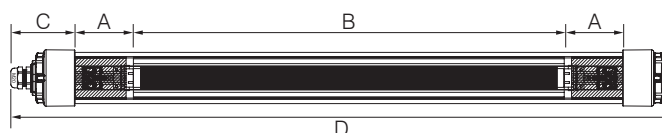
840149	840086	10 W LED	1'400 lm	4'000 K	230 V	65	625	85	905
840150	840087	18 W LED	2'600 lm	4'000 K	230 V	65	1'235	85	1'515
840152	840088	24 W LED	3'500 lm	4'000 K	230 V	65	1'535	85	1'815

### Dimensions

#### StreamLED 50



#### StreamLED 70



# StreamLED 70 with emergency light function

## StreamLED 70 with emergency light function



### Features lamp

- Made of polycarbonate or borosilicate glass
- Through-wiring for light chains
- Resistant to mechanical and chemical stress
- Even in cases of extreme working conditions, breakdown and maintenance-free
- Screws and brackets made of stainless steel
- Closure cover made of glass fiber reinforced plastic
- Narrow colour tolerance < 3SDCM

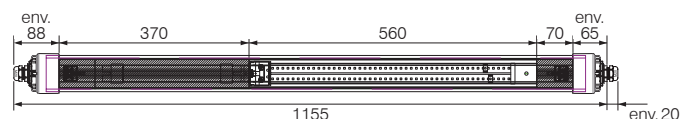
### Features accumulator battery

- Nickel-cadmium cells (NiCd)
- Good charging characteristics in high temperatures
- High energy maintain of the charged accumulator battery
- Easy connection with flat plug
- Compliant with IEC 61951-2 (constant charging endurance test)
- Expected service life of 4 years

### Technical data

Light source:	LED
System performance:	18 W
Operating voltage:	220 - 240 V
Light efficiency:	150 lm/W
Mains frequency:	50/60 Hz
Colour temperature:	4'000 K
Beam angles:	160°
Protection category:	IP68 <sub>0.5m</sub> /69 K (higher protection category IP68 <sub>5m</sub> possible)*
Temperature range:	0° C to +35° C
Operating time in battery operation:	approx. 3 h
Switching to battery operation:	< 0.25 s after recognition
Output in battery operation:	approx. 25 %
Battery charging time:	20 h

\*IP68<sub>5m</sub>: For constant use up to maximum 5m under water with end-caps and sealed connection.



### Our assortment

840501	StreamLED 70 emergency with through wiring, polycarbonate, 18 W, 230 VAC, 4'000 K
840502	StreamLED 70 emergency with through wiring, glass, 18 W, 230 VAC, 4'000 K

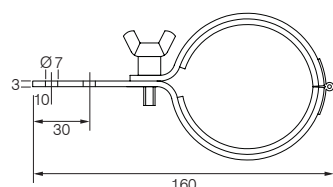


Clearly visible function monitoring of the battery charging

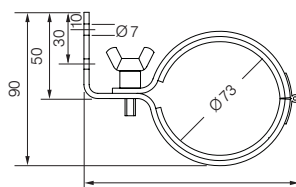


Simple battery replacement through plug connectors

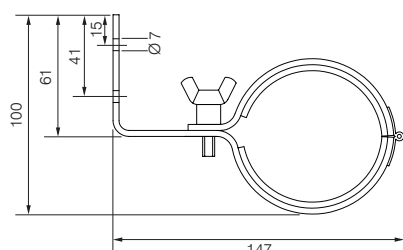
### Accessories and spare parts



Item no. 840085



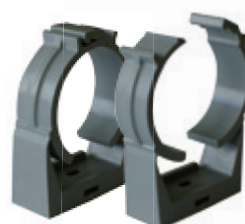
Item no. 840083



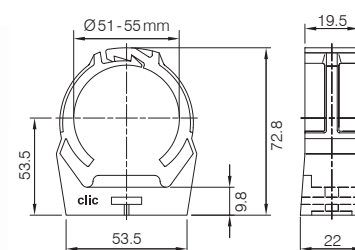
Item no. 840084



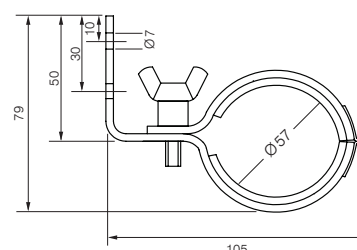
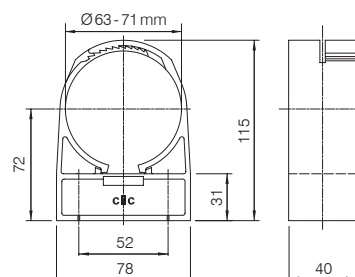
Item no. 103110



Item no. 102800



Item no. 103355



Item no. 840082

### Lamps for StreamLIGHT 70

Lamps for StreamLIGHT 70	
052065	Fluorescent bulb T8-L, 18W, 4'000K, 1'350lm
050911	Fluorescent bulb T8-L, 36W, 4'000K, 3'350lm
051312	Fluorescent bulb T8-L, 58W, 4'000K, 5'200lm
020204	Fluorescent bulb T5-L, 39W, 4'000K, 3'100lm
020205	Fluorescent bulb T5-L, 54W, 4'000K, 4'450lm
020206	Fluorescent bulb T5-L, 80W, 4'000K, 6'150lm
040737	Fluorescent bulb, DULUX-S/E, 11W, 4'000K, 900lm
040090	Fluorescent bulb, DULUX-L, 18W, 4'000K, 1'200lm
040092	Fluorescent bulb, DULUX-L, 36W, 4'000K, 2'900lm
052064	Fluorescent bulb, DULUX-L, 55W, 4'000K, 4'800lm
033073	Fluorescent bulb, DULUX-L, 80W, 4'000K, 6'000lm

### StreamLED 50 and 70

161521	LED bulb 7.3W/230VAC, 4'000K, 1'100lm, L=590mm
168685	LED bulb 16W/230VAC, 4'000K, 2'400lm, L=1'200mm
168686	LED bulb 24W/230VAC, 4'000K, 3'600lm, L=1'500mm

### Accessories StreamLED 50

840082	Holder 4A, Ø54 mm/wall fitting, angled 105 mm
102800	Clamps synthetic type 51 Ø51-55 mm
103110	Cover cap synthetic anthracite
033284	Hexagon wrench key for fixing of the cover caps
161045	Cover cap SL50, with cable gland M20×1.5, synthetic anthr.
161046	Cover cap SL50, with locking device M20×1.5, synthetic anthr.

Further spare or separate parts such as safety tube (Plexiglass or glass) on request.

### Accessories StreamLIGHT 70 and StreamLED 70

840083	Holder A4, Ø70 mm/wall fitting, angled 130 mm
840084	Holder A4, Ø70 mm/wall fitting, angled 147 mm
840085	Holder A4, Ø70 mm/surface mounting straight, 160 mm
103355	Clamps synthetic type 63, Ø63-71 mm
136624	Cover cap SL70, with cable gland M20×1.5 mm, synthetic anthr.
148225	Cover cap SL70, with locking device M20×1.5 mm, synthetic anthr.