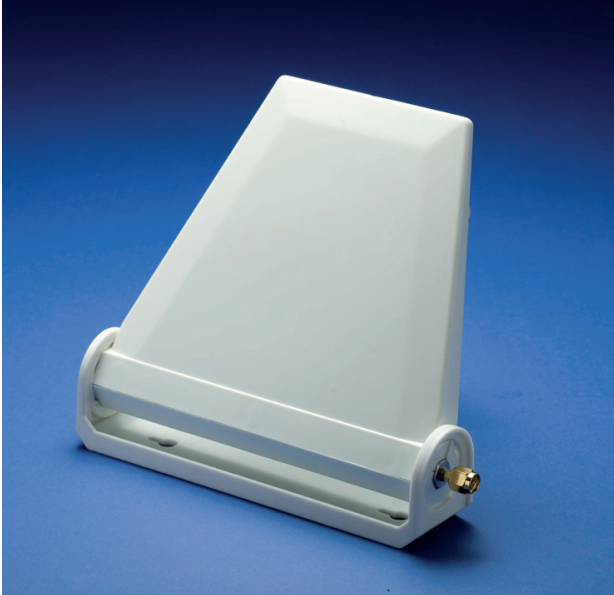


WLD

Indoor- and outdoor Dual Band antenna

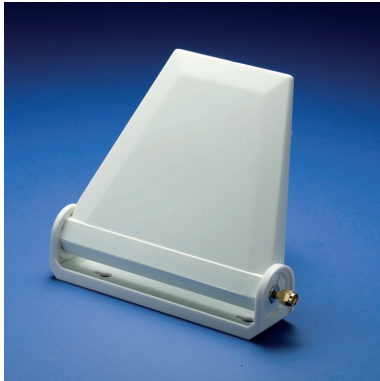


WLD is a directional antenna that provides enhanced RF radiation in fixed GSM 900/1800/1900 and UMTS networks. The antenna enables improved transmission. The WLD operates at 890–960 MHz and 1710–2170 MHz. The wall-mounted WLD features an attractive, discreet design. SmarTEq antennas support all major standards used in fixed wireless networks.

- **Improved transmission**
- **Attractive, elegant design**
- **Operates in both GSM 900/1800/1900 and UMTS frequency simultaneously**
- **High Gain**
- **All versions RoHS compliant**

SMARTEQ[™]
■■■■■ antennas

www.smarTEq.com



Specifications

Electrical

Frequencies	890-960/1710-2170 MHz
Nominal impedance	50 Ω
VSWR	< 1.6:1@BW 8%
Gain	4 dBi @ 900 MHz, 5 dBi @ 1800 MHz
Max Power	15 W

Mechanical

Dimension	200 x 150 x 45 (LxWxH) mm
Weight	200 g
Material	ABS
Colour	White

Product No

SMA(f) connector	WLD+
SMA(m) connector	WLD-2

Smarteq reserves the right to change specifications without prior notice.

550032D

WLD C/UK

Smarteq develops and supplies high-quality antennas and antenna systems for the wireless transfer of speech and data, communication to and from vehicles and machine to machine. Our staff is fully focused on developing high-performance antennas that will continue to set new standards of excellence that will exceed our customers' expectations

SMARTEQTM
■■■■■ antennas

Smarteq Wireless AB

P.O. Box 4064 | SE-182 04 Enebyberg | Sweden

www.smarteq.com



Smarteq is certified according to
ISO/TS 16949, ISO 14001