

**Malux**



**PC100**

**Modular Ex-PC**



## PC100 - Concept

The future of HMI-devices for the use in explosion endangered areas is less based on short lived proprietary products but more on all-purpose, modular products of latest technology and highest capability.

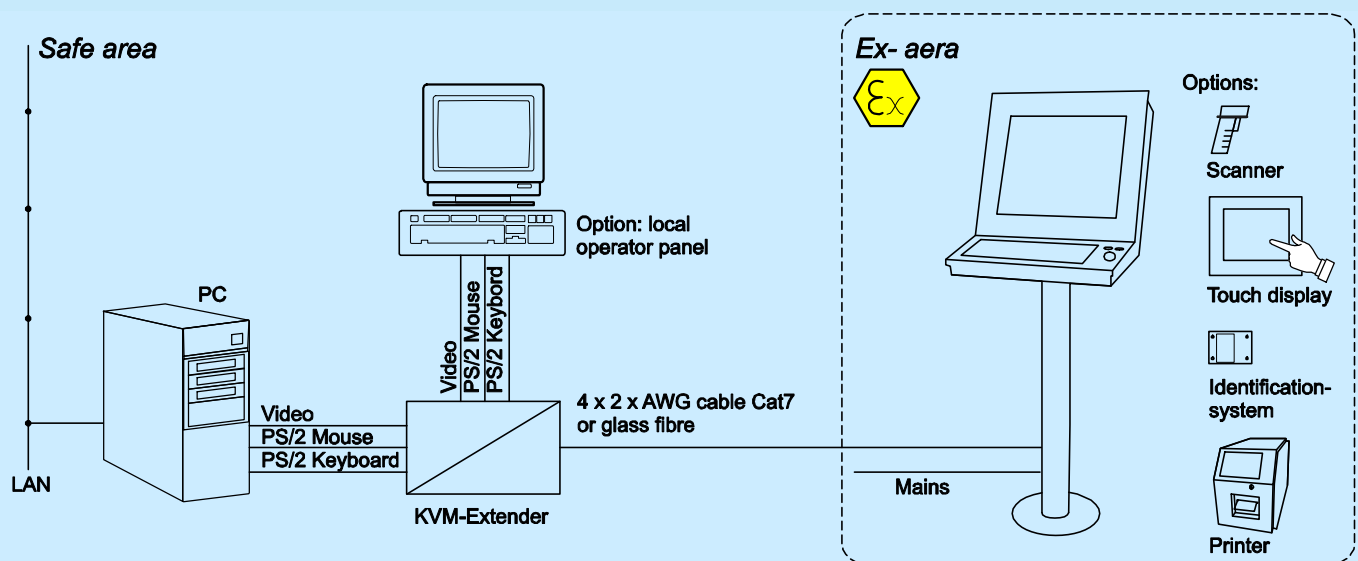
As a user, you should have a HMI-device at your disposal, which is completely autonomous from today's PC-platforms and software and thereby featuring a long product life cycle.

This trend led to the development of the PC100-concept, which comes up to today's and future requirements by use of an intelligent combination of different Ex-protection classes.

A high degree of technical and functional independency is reached by the use of standard components, which allows the integration of latest technology at anytime.

The stainless steel designer housing is specific to the needs of international production facilities with varying requirements (GMP-guideline, clean rooms, etc.).

The PC100 offers a multiplicity of potentials to cope with the special demands of our customers. On this account, numerous options are available for the PC100 as well as a non-Ex-device for industry-compatible applications in non-hazardous areas.



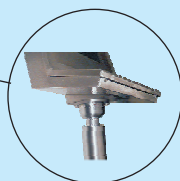
## Advantages in comparison

- ☞ No additional, complex Ex i- solution with multiple power supplies, which must be installed in a short distance (approx. 5 m) to the display. No Ex i- multi wire connection between Ex i- power supply and display  
→ PC100: Direct feed of the main voltage (230V AC or others) using the integrated Ex e terminal box at the TFT display
- ☞ No special Ex i- KVM- Extender  
→ PC100: Standard VGA- KVM- extender based on copper 2 x 4 x AWG 24 or glass fibre, connected in the integrated Ex e- terminal box – **no intrinsic safety proof is required!**
- ☞ No molding at the display needed to handle the energy by coupling of intrinsically safe circuits  
→ PC100: Standard display with resin filling
- ☞ No pressured air and waiting time while purging required, no turn off by failure of pressured air  
→ PC100: Only electrical power required
- ☞ No special displays limited by maximum power consumption, special technology or selected manufacturer  
→ PC100: update to newest display technology at any time
- ☞ No resistive touch display with polyester foil  
→ PC100: Touch display  
The PC100 owns a robust surface from hardened glass. Thereby it is superior to the usually used resistive touch solutions in the properties of contrast, viewing angle and mechanical lifespan.
- ☞ No multi wiring at installation  
→ PC100: All modules of the PC100 like display, KVM, keyboard and Trackball are coupled by plug connectors
- ☞ No Ex d housing  
→ PC100: Display module depth of 105 mm, built in the Design housing. Available material: stainless steel, steel, aluminium or in your actual existing control panel
- ☞ No short lived proprietary housing  
→ PC100 The modules are mounted in a design housing of stainless steel (IP65), suitable for food or pharmaceutical industry

## PC100 - Exposition and housing types



### PC100 - Standard housing mounted on a pillar,

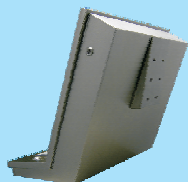


Solid mounted or with swivel joint (350 °)  
Pillar diameter 100 mm, more warp resistance than usual 60 mm systems

### PC100 Standard housing with 15° angle adapter or mounted direct to wall

**Direct to wall:** Mounting with a minimum construction height  
Construction height at the display area approx. 140 mm, Construction height at the keyboard area maximum 350 mm  
Case opening at the front with pneumatic spring - for easy wiring

**With 15° angle adapter:** Provides ergonomic wall mounting  
Angle adaptor for operator workstation according NAMUR-recommendation  
Keyboard and display in 15 ° inclination to the operator



### PC100 Standard housing mounted on a wall bracket

Solid mounted or on a swivel joint (350 °)  
Wall bracket system with 100 mm pipe diameter  
Raised bends and warp resistance



### PC100 Display module for panel mounting

Front-sided protection class of the display: IP65  
Necessary protection class of the panel: at least IP54  
Small module depth: 105 mm (8.4 " and 10.4 " displays: 85 mm)  
Simple panel mounting with threaded bolts



### PC100 Touch housing for direct wall mounting

Construction height only 140 mm  
Case opening on the front provides direct mounting on the wall  
Opening assisted by pneumatic spring - for easy wiring



### PC100 Ergonomy

Special edition with variable inclination of display and keyboard



### PC100 mobile Application

Special edition PC100 for mobile operation

## PC100 - Components

### Display modules (TÜV 00 ATEX 1607X)



#### Touch display module 8,4"

PC100- Module with superior PC100- Touch-technology (non resistiv)  
Max. resolution: VGA



#### Touch display module 10,4"

PC100- Module with superior PC100- Touch-technology (non resistiv)  
Max. resolution: XGA



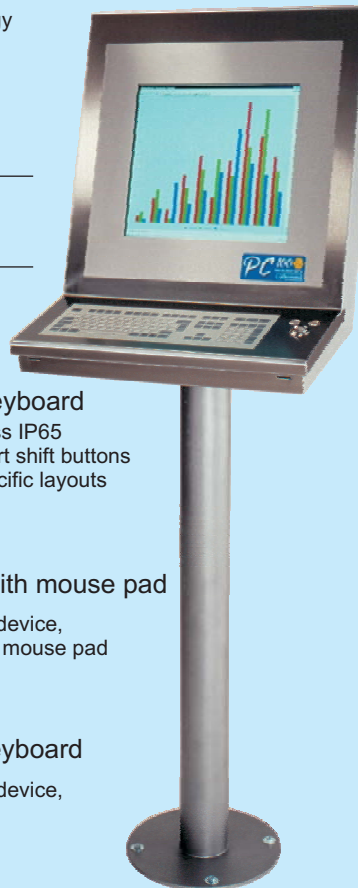
#### Display module 15"/19"

Module with standard TFT- display or with PC100- Touch technology  
Max. resolution: SXGA

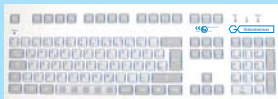


#### Display module 21"

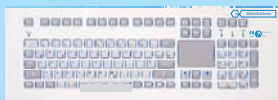
Module with standard TFT- display or with PC100- Touch technology  
Max. resolution: UXGA



### Keyboards



**KB153.0**  
**Standard keyboard**  
Protection class IP65  
105 Keys, short shift buttons  
Language specific layouts



**KB153.2**  
**Keyboard with mouse pad**  
Like standard device, with additional mouse pad



**KB153.4**  
**Compact keyboard**  
Like standard device, only 30 keys



**KB153.1**  
**Keyboard with stainless steel housing**  
Protection class IP65  
105 Keys, Language specific layouts



**KB153.7**  
**Wireless keyboard**  
Wireless keyboard with short shift buttons, Water- und Dust-proof, IP65!

### Track ball TB153.0.0

Intrinsically safe track ball with two buttons and stainless steel ball 38/50 mm  
Protection class IP65

### TB153.0.2

Industrial mouse  
Alternative intrinsically safe pointing device  
no moving parts, IP65

### TB153.0.3

Miniature mouse  
Alternative intrinsically safe pointing device  
no moving parts, IP65

### TB153.0.5 Industrial joysticks

Multi function joystick  
2 Axis  
2 buttons on head  
USB + PS/2

### Pointing devices



### Accessories

#### Touch display

PC100- module with superior PC100- Touch-technology (non resistive)  
TÜV 00 ATEX 1607 X

#### Identification ID153

Contactless reading of several protocols  
Serial Interface to PC  
TÜV 01 ATEX 1720 X

#### Scanner HS153

Ex i- Barcode scanner for all usual barcodes  
Robust design  
Serial connection to PC  
TÜV 02 ATEX 1811

#### EEx p- Printer

Customized printer with paper output in hazardous area, specific stainless steel housing  
DMT 02 ATEX E 086

#### Key switch

Provides secure access to the PC terminals (conform FDA)

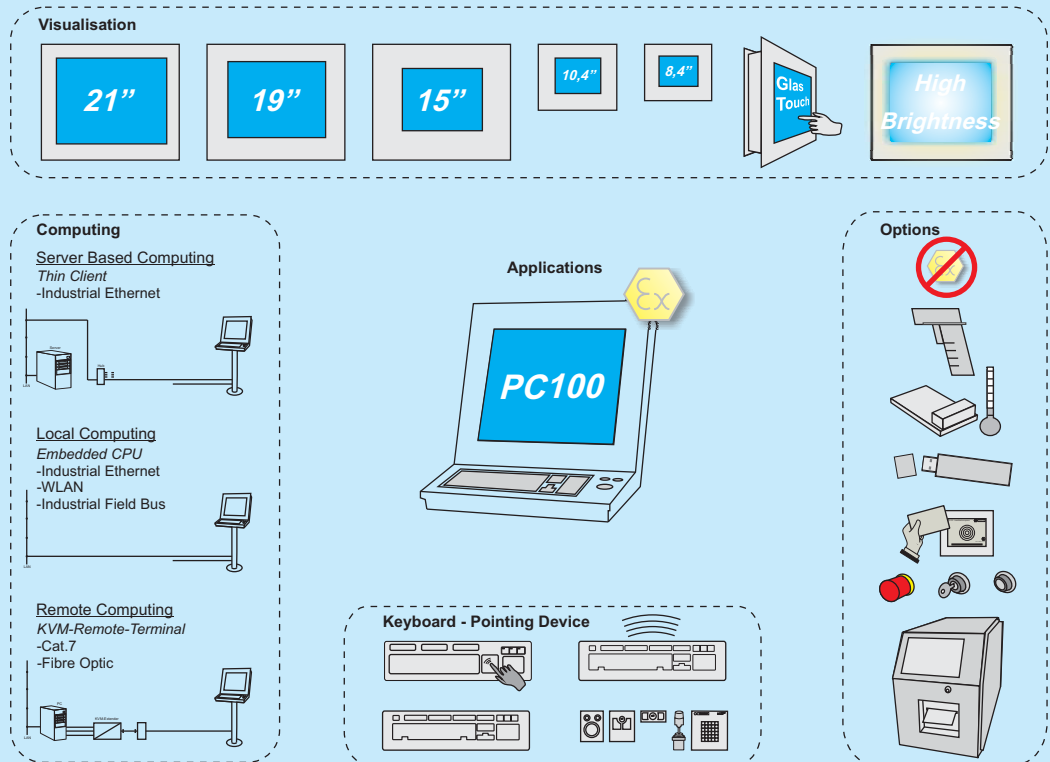
#### Additional serial Interfaces





## PC100 - New peripherals, accessoires and components

### PC100 - Scope



### PC100 - Embedded CPU - Thin Client applications

- **Embedded CPU** (Local computing): the CPU is placed local, in hazardous area. Connection to LAN via Cat.7 ETHERNET, WLAN or Industrial Field Bus
- **Thin Client** (Server based computing) the server is placed in safe area, the Remote Terminal (PC100) is placed in hazardous area. Connection to LAN via Industrial Field Bus

### PC100 - Display advancements

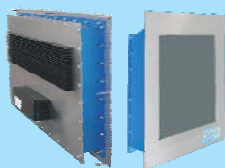
- **Display size 21"**: maximum resolution: UXGA (1600 x 1200 pixels)
- **Resistive Touch display**: economically priced touch solution
- **High Brightness- Display**: for bright environments, available for all display sizes

### ID153 - Identification system for PC100 new ergonomic design

- Reads transponder cards (TROVAN, MIFARE, Legic etc.)
- New ergonomically integration into PC100 housing
- Different PC interfaces available

### FD153 - USB 2.0 Flashdisk

- Rapid data exchange in Zone 1/21
- Up to 16 GB
- Ex i- USB 2.0 Interface
- Full USB 2.0 compatible via new KI153 - USB 2.0



## PC 100 - Options



### PC100 for non Ex- Area

- Reduced weight (no filling material)
- Optional fan on the rear plate of display module
- Optional signal lights (e.g. on the top of the housing)



### Special buttons

- Integration of any switch and push-button series
- For the realization of an individual control function
- Protection class IP65 front-sided



### Ex- heating / cooling

- For application in outdoor-area with extreme ambient temperatures
- Supply via separate Ex e- clamp housing inside the PC100

## Technical Details

|                                    | Display module 19"                                   | Display module 15" | Display module 10,4" | Display module 8,4" |
|------------------------------------|--|--------------------|----------------------|---------------------|
| Ex- protection                     | II 2 G, Ex e q [ib] IIC T4                           |                    |                      |                     |
| EC- Certificate                    | TÜV 00 ATEX 1607 X                                   |                    |                      |                     |
| Mounting                           | Hazardous area, Zone 1 and Zone 2                    |                    |                      |                     |
| Mains                              | 230V AC, 110V AC, 24V DC                             |                    |                      |                     |
| Display- resolution                | SXGA: 1280 x 1024                                    | XGA: 1024 x 768    | XGA: 1024 x 768      | VGA: 640 x 480      |
| Dimensions front frame (Module)    | 530 x 450 mm   | 530 x 450 mm       | 329 x 274 mm         | 286 x 238 mm        |
| Installation depth                 | 105 mm   | 105 mm             | 85 mm                | 85 mm               |
| Weight (Module)                    | ca. 37 kg  | ca. 29 kg          | ca. 12 kg            | ca. 10 kg           |
| Weight (complete Standard housing) | ca. 58 kg  | ca. 50 kg          | depends on housing   | depends on housing  |
| Housing protection                 | Front: IP 65   |                    |                      |                     |
| Ambient temperature                | 0°C up to 40°C, extended temperature range on demand |                    |                      |                     |

See EC-TYPE EXAMINATION CERTIFICATE TÜV 00 ATEX 1607 X for further specifications

## Type code

|                          |  |     |    |    |    |    |
|--------------------------|--|-----|----|----|----|----|
| PC100                    | .x   | .x  | .x | .x | .x | .x |
| Mains                    | 230V AC .....                                    | .0  |    |    |    |    |
|                          | 110V AC .....                                    | .3  |    |    |    |    |
|                          | 24V DC .....                                     | .6  |    |    |    |    |
| Display: TFT, 8,4" ..... |  | .02 |    |    |    |    |
|                          | TFT, 10,4" .....                                 | .01 |    |    |    |    |
|                          | TFT, 15" .....                                   | .0  |    |    |    |    |
|                          | TFT, 19" .....                                   | .3  |    |    |    |    |
| Remote to PC:            |  |     |    |    |    |    |
|                          | 4 x 2 x twisted pair cable .....                 | .0  |    |    |    |    |
|                          | Glass fibre .....                                | .1  |    |    |    |    |
| Ambient housing:         |  |     |    |    |    |    |
|                          | Without (only display- module) .....             | .0  |    |    |    |    |
|                          | Design housing <sup>2</sup> with writing desk .. | .1  |    |    |    |    |
|                          | Design housing <sup>2</sup> without writing d.   | .4  |    |    |    |    |
|                          | Individual housing .....                         | .9  |    |    |    |    |
| Front window:            |  |     |    |    |    |    |
|                          | Normal .....                                     | .0  |    |    |    |    |
|                          | Anti reflexion coating .....                     | .1  |    |    |    |    |
| Touch screen:            |  |     |    |    |    |    |
|                          | Without .....                                    | .0  |    |    |    |    |
|                          | Integrated Touch screen .....                    | .1  |    |    |    |    |

## Transmission capacity

### Standard KVM- extender

| Distance    | Display- resolution |
|-------------|---------------------|
| Up to 300 m | XGA (1024 x 768)    |
| Up to 120 m | SXGA (1280 x 1024)  |
| Up to 60 m  | UXGA (1600 x 1200)  |

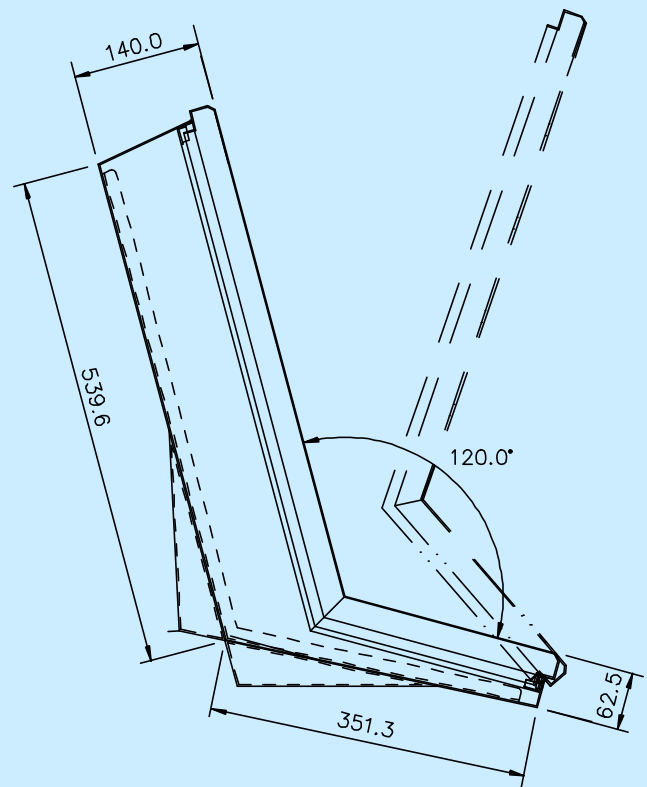
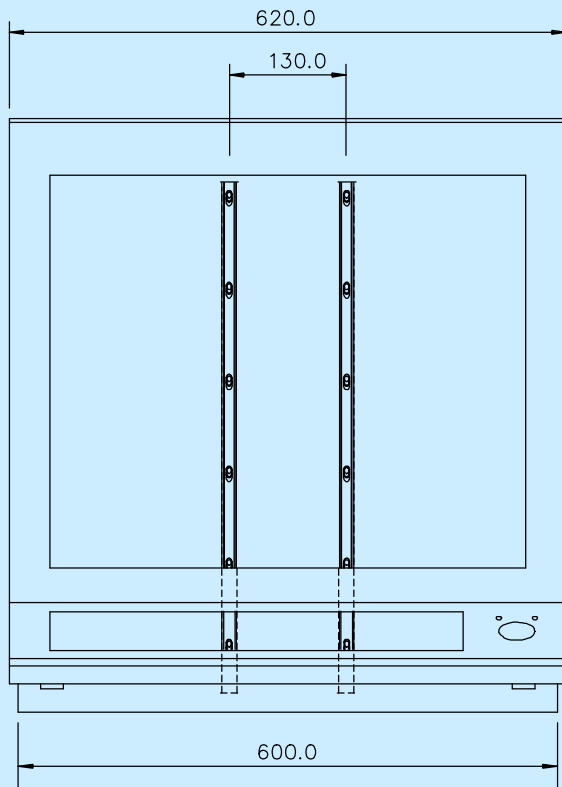
KVM- Extender up to 10 km on demand

### Further Options on Demand:

- Individually adapted housing
- Housing material: V4A, stainless steel coated or varnished,
- Bracket mounting, pillar mounting and angle adaptor
- Three keys Trackball

2: Suitable only for display size 15" and bigger

## Dimensions of design housing with writing desk



## Dimensions of design housing without writing desk

