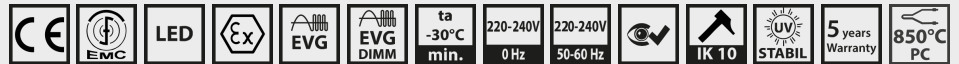
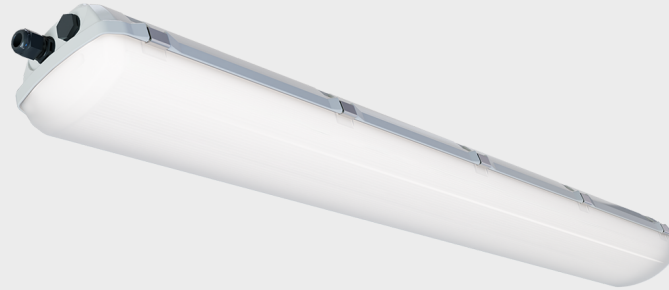


EXTRA-EX2/21
IP66/IP67
ZONE 2/21


Description

Robust linear luminaire designed for hazardous areas according to IECEx/ATEX (zones 2/21, 22). Body made of robust polycarbonate (RAL 7035) with a silicone seal that does not degrade and is highly resistant to chemicals and oils or weathering. Cover made of highly resistant opal polycarbonate guaranteeing excellent brightness homogeneity and glare reduction. Equipped with electronic components that guarantee high specific power and LED lifetime of up to 110,000 h even at high temperatures. It is characterized by high splash and dust resistance IP66/IP67 as well as high impact resistance IK10. Supplied as standard with stainless steel clips and AISI304 stainless steel retaining lips. Designed for snap-on and hinge mounting.

ADVANTAGES:

- European product – made in the Czech Republic
- Can also be used for outdoor uncovered areas
- UV resistance
- LOOP-IN / LOOP-OUT – ready for looping
- High specific output up to 170 lm/W
- For ambient temperatures from -30 °C to +60 °C (depending on luminaire variant)
- Emergency version 3h – LiFePO4 battery

Specifications

Operating voltage:

220-240 V / 50/60 Hz AC, 220-240 V DC

Source:

LED, 4000K, CRI +80, MacAdam3

Housing:

Plastic material PC (polycarbonate)

Cover:

PC (polycarbonate) opal

Fastening:

Direct fixing to the ceiling or wall of the illuminated space by means of two self-locking fixing brackets (standard equipment), hanging by means of wire hangers or cable hangers.

Connection:

Screwless three-pole terminal block, max. wire cross-section 2.5 mm².

Standard equipment:


2x Ex plastic cable gland M20x1,5 for cable Ø 7-13 mm, 2x Ex plastic cable plug M20 and 2x stainless steel fixing bracket (AISI304) for direct fixing of the luminaire to the mounting surface.


Calculated lifetime – LED modules:

L80B50 Ta max – 110 000 h

L90B50 Ta 25 – 110 000 h

EXTRA-EX2/21 – ATEX – (FTZU 25 ATEX 0056X)

 II 3G Ex nR IIC T6 Gc

 II 2D Ex tb IIIC T85°C Db

EXTRA-EX2/21 – IECEx – (IECEX FTZU 25.0020X)

Ex nR IIC T6 Gc

Ex tb IIIC T85°C Db

On request

5000K/6500K – chromaticity temperature

09 – 3x M25 gland/plug hole

SILICONE-FREE – on request

ND – ON/OFF luminaire

D2 – DALI2 luminaire

M3A – ON/OFF luminaire + emergency 3h, AUTOTEST

LM3 – ON/OFF luminaire + emergency 3h

LA3D2 – DALI2 luminaire + emergency 3h, AUTOTEST

LM3D2 – DALI2 luminaire + emergency 3h

LMD3D2 – DALI2 luminaire + emergency 3h, DALI

ND-1F – ON/OFF luminaire 3×2,5 mm2

ND-3F – ON/OFF luminaire 5×2,5 mm2

D2-1F – DALI2 luminaire 5×2,5 mm2

D2-3F – DALI2 luminaire 7×2,5 mm2

LM3A-3F – ON/OFF luminaire + emergency 3h, AUTOTEST 5×2,5 mm2

LM3-3F – ON/OFF luminaire + emergency 3h 5×2,5 mm2

LA3D2-3F – DALI2 luminaire + emergency 3h, AUTOTEST 7×2,5 mm2

LM3D2-3F – DALI2 luminaire + emergency 3h 7×2,5 mm2

LMD3D2-3F – DALI2 luminaire + emergency 3h, DALI 7×2,5 mm2

Variants

Number items	Name of variant	Luminous flux (lm)	Specific power luminaires	Power input (W)	Ta (°C)	Dimensions A x B x C (mm)
66139	EXTRA-EX2/21-G-L06-840-1700-0ND-08-PD	1382	163 lm/W	8,5	-30°C≤ta≤50°C	670 x 155 x 105
66140	EXTRA-EX2/21-G-L06-840-2500-0ND-08-PD	2249	156 lm/W	14,4	-30°C≤ta≤50°C	670 x 155 x 105
66141	EXTRA-EX2/21-G-L06-840-5000-0ND-08-PD	4478	155 lm/W	28,9	-30°C≤ta≤50°C	670 x 155 x 105
66247	EXTRA-EX2/21-G-L12-840-3300-0ND-08-PD	2765	164 lm/W	16,9	-30°C≤ta≤60°C	1280 x 155 x 105
66248	EXTRA-EX2/21-G-L12-840-4000-0ND-08-PD	3339	161 lm/W	20,8	-30°C≤ta≤55°C	1280 x 155 x 105
66249	EXTRA-EX2/21-G-L12-840-5000-0ND-08-PD	4159	158 lm/W	26,4	-30°C≤ta≤55°C	1280 x 155 x 105
66250	EXTRA-EX2/21-G-L12-840-7000-0ND-08-PD	5947	162 lm/W	36,8	-30°C≤ta≤55°C	1280 x 155 x 105
66251	EXTRA-EX2/21-G-L12-840-10000-0ND-08-PD	8280	157 lm/W	52,9	-30°C≤ta≤45°C	1280 x 155 x 105
66427	EXTRA-EX2/21-G-L15-840-3750-0ND-08-PD	3267	166 lm/W	19,7	-30°C≤ta≤60°C	1580 x 155 x 105
66428	EXTRA-EX2/21-G-L15-840-4900-0ND-08-PD	4147	163 lm/W	25,4	-30°C≤ta≤55°C	1580 x 155 x 105
66429	EXTRA-EX2/21-G-L15-840-7500-0ND-08-PD	6239	157 lm/W	39,7	-30°C≤ta≤50°C	1580 x 155 x 105
66430	EXTRA-EX2/21-G-L15-840-8300-0ND-08-PD	7666	161 lm/W	47,6	-30°C≤ta≤35°C	1580 x 155 x 105
66431	EXTRA-EX2/21-G-L15-840-12550-0ND-08-PD	10230	160 lm/W	64,1	-30°C≤ta≤45°C	1580 x 155 x 105
66432	EXTRA-EX2/21-G-L15-840-16700-0ND-08-PD	13797	162 lm/W	85,1	-30°C≤ta≤35°C	1580 x 155 x 105
66433	EXTRA-EX2/21-G-L15-840-20000-0ND-08-PD	16446	159 lm/W	103,6	-30°C≤ta≤35°C	1580 x 155 x 105

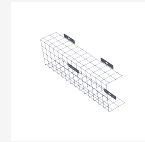
Luminous flux and luminaire power tolerance ±10%

You can view the variant detail via the item number.

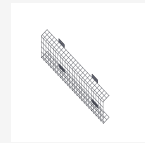
Accessories

Protective cage EXTRA, EUROPA – L06

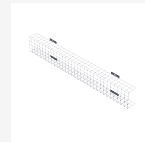
Item number: **20041**
Product type: **001748-RAL9016**

**Protective cage EXTRA, EUROPA – L12**

Item number: **20042**
Product type: **001749-RAL9016**

**Protective cage EXTRA, EUROPA – L15**

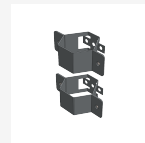
Item number: **20043**
Product type: **001750-RAL9016**

**Telescopic magnet**

Item number: **63023**
Product type: **038013**

**Set of pole brackets (Ø 60 mm), AISI304 (2 pcs)**

Item number: **60089**
Product type: **051093**

**Set of pole brackets (Ø 50 mm), AISI304 (2 pcs)**

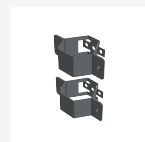
Item number: **60090**
Product type: **051094**

**Set of pole brackets (Ø 42 mm), AISI304 (2 pcs)**

Item number: **60091**
Product type: **051095**

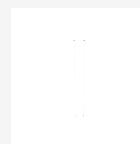
**Set of pole brackets (Ø 60 mm), AISI316 (2 pcs)**

Item number: **66929**
Product type: **051125**

**Set of pole brackets (Ø 50 mm), AISI316 (2 pcs)**

Item number: **66930**
Product type: **051126**



Set of pole brackets (Ø 42 mm), AISI316 (2 pcs)Item number: **66931**Product type: **051127****Cable suspender – 3 m (2 pcs)**Item number: **3575**Product type: **051131****Set of wall brackets – 45° angle EXTRA (2 pcs) – AISI316**Item number: **67005**Product type: **051167****EXTRA wire suspension EXTRA (2 pcs)**Item number: **69110**Product type: **051192****Set of wall brackets – 45° angle EXTRA, AISI304 – (2 pcs)**Item number: **34607**Product type: **064643****Set of adjustable fixing brackets EXTRA (2 pcs)**Item number: **43432**Product type: **065465**

© 2026 All rights reserved. VYRTYCH a.s. does not warrant the accuracy or completeness of the information provided herein and is not responsible for any events that may occur as a result of unqualified reliance on this information. The information contained herein does not constitute a commercial offer and does not form part of a quotation or contract, unless confirmed by VYRTYCH a.s..